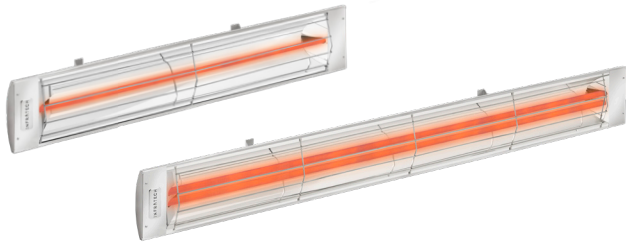


Heater Comparison:

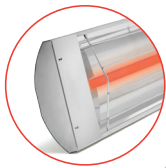
C/CD-Series and W/WD-Series



C/CD-Series

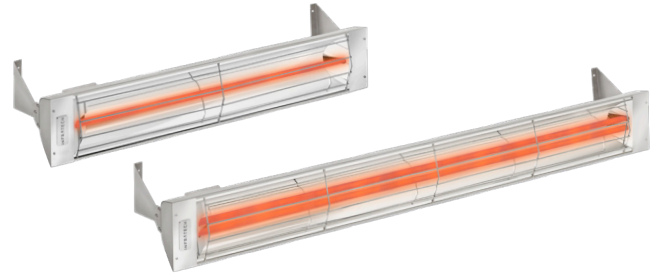
C-shaped body with 2.5" depth

Two inset mounting brackets for a floating appearance



2.5"

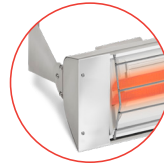
Ideal for wall or ceiling mount applications



W/WD-Series

W-shaped body with 3" depth

Two mounting brackets at each heater body end



3"

Ideal for flush-mount applications



All heaters available in:

304 stainless steel construction



Marine UpGrade
316 stainless steel



Eight standard colors
with unlimited custom
color options

American made
3-year warranty